



ENG-028-2017

September 21, 2017

**RFQ No. 2017-02**  
**Engineering Services Washington Avenue Drainage Improvements**

**RE: Addendum No. 1**

Each Offeror shall acknowledge receipt of this Addendum Number One (1) by including with the Proposal.

Addendum Number 1 is issued to provide changes and/or clarifications to the above referenced RFQ as follows:

**Questions Received:**

Question: Can COA provide any information on Phase VIII that this Phase will be tying into?

Answer: Refer to the attached drawings.

**Clarification:**

Prospective offerors are advised that Fed-Ex, U.P.S. or U.S.P.S. cannot guarantee delivery by 3:00 p.m. and that Alamogordo, NM is not guaranteed next day delivery service.

All deliveries of responses must be addressed as follows:

Name: Purchasing Department  
Attn.: Barbara Pyeatt, CPO  
Reference: RFQ 2017-02 Engineering Services Washington Avenue Drainage Improvements  
Address: 2600 N. Florida Avenue  
Alamogordo, New Mexico 88310

**RFQ No. 2017-02**  
**Engineering Services Washington Avenue Drainage Improvements**

**Addendum No. 1**

All other provisions of the Contract Documents shall remain unchanged. This addendum is hereby made part of the Contract Documents. Each Offeror shall acknowledge receipt of this Addendum Number One (1) using this acknowledgement page and submit with the Proposal.

Sincerely,

Barbara Pyeatt  
Chief Procurement Officer

Business Name: \_\_\_\_\_

Received By: \_\_\_\_\_  
Print Name

Date Received: \_\_\_\_\_

Signature: \_\_\_\_\_

File Name:	Proj. Name:	Proj. Date:	Scale:	Drawn By:	Reviewed By:	Date:	Appr.:
ALB-116.dgn	ALAMOGORDO FLOOD CONTROL PROJECT	AUGUST 2017	1" = 50'	W912 P.P. 16-R-0023	W912 P.P. 16-R-0023		

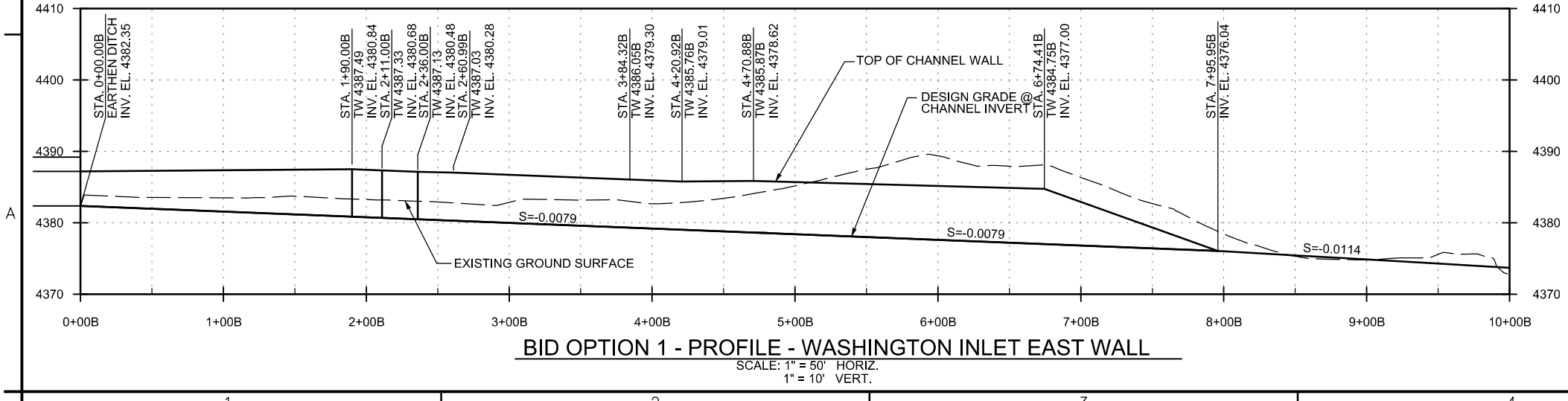
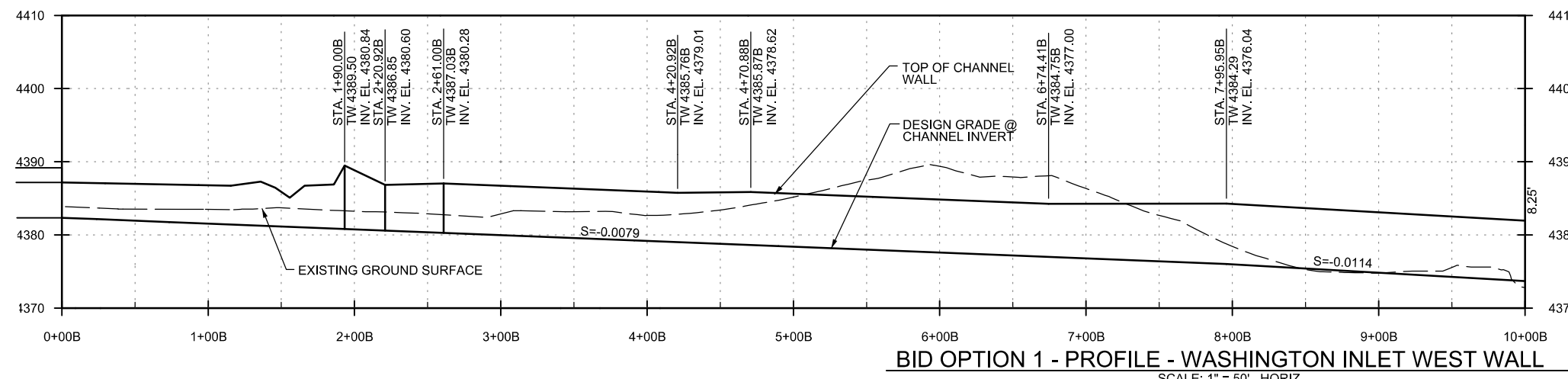
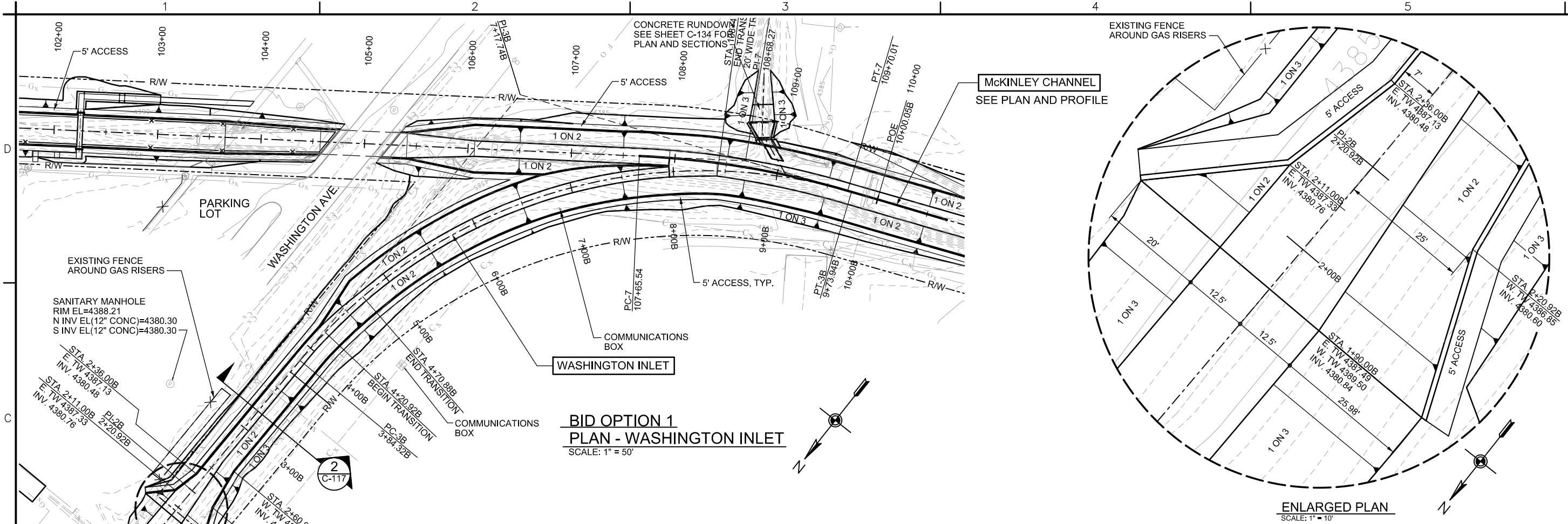
DESIGN BY:	SEE COVER SHEET
DRAWN BY:	SEE COVER SHEET
REVIEWED BY:	SEE COVER SHEET

U.S. ARMY ENGINEER DISTRICT  
CORPS OF ENGINEERS  
ALBUQUERQUE, NEW MEXICO

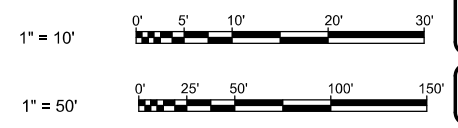
LOCAL PROTECTION PROJECT  
ALAMOGORDO FLOOD CONTROL PROJECT  
MCKINLEY CHANNEL, PHASE VIII  
**BID OPTION 1 - WASHINGTON INLET  
PLAN AND PROFILE**

SHEET NO.  
**C-116**  
16 OF 40

SEQUENCE NO.  
**24**



- NOTES:**
- SEE SHT G-002 FOR LEGEND.
  - SEE STRUCT. SHT S-002 FOR TIE-IN BETWEEN EXISTING AND NEW CONSTRUCTION.
  - SEE SHT C-135 FOR TYPICAL CHANNEL SECTIONS AND STRUCTURAL SHEETS FOR CHANNEL SCHEDULE.



BID OPTION 2

MCKINLEY CHANNEL  
SEE PLAN AND PROFILE

MCKINLEY CHANNEL INLET  
SEE SHEET C-134  
FOR PLAN AND SECTIONS



File Name:	117.dgn	Date:	11/17/2017
Plot Date:	AUGUST 2017	Scale:	20:1
Project:	W912P-P-16-R-0023	Revision:	1
Drawn By:	W912P-P-16-R-0023	Checked By:	
Reviewed By:		Approved By:	
Design By:		Mark:	
Drawn By:		Description:	
See Cover Sheet			
See Cover Sheet			
See Cover Sheet			

U.S. ARMY ENGINEER DISTRICT  
CORPS OF ENGINEERS  
ALBUQUERQUE, NEW MEXICO

DESIGN BY: SEE COVER SHEET  
DRAWN BY: SEE COVER SHEET  
REVIEWED BY: SEE COVER SHEET

LOCAL PROTECTION PROJECT  
ALAMOGORDO FLOOD CONTROL PROJECT  
MCKINLEY CHANNEL, PHASE VIII  
BID OPTION 1 AND 2  
WASHINGTON INLET CONFLUENCE -  
PLAN AND SECTIONS

**BID OPTION 1**  
**PLAN - WASHINGTON INLET CONFLUENCE**  
SCALE: 1" = 20'

**SECTION**  
**C-117**  
SCALE: 1" = 5'

**SECTION**  
**C-117**  
SCALE: 1" = 5'

BID OPTION 1

SHEET NO.  
**C-117**  
17 OF 40

SEQUENCE NO.  
**25**

100% SUBMITTAL - NOT FOR CONSTRUCTION

